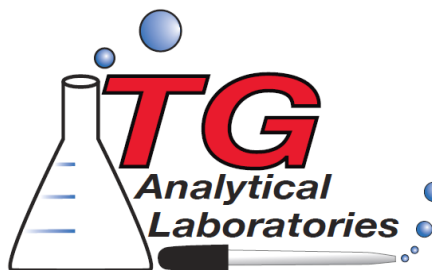


# Drinking Water Sampling Instructions

Please follow directions carefully and call with any questions

920-757-1355



## Total Coliform and E. coli Bacteria Sampling Instructions

For bacteria testing use a sterile sample bottle. We recommend sampling from the primary drinking water tap. There is a white powder in the bottle for de-chlorinating, do not rinse out.

### 1. Sterilize the Faucet.



Remove the aerator from the end of the faucet; make sure all rubber seals are also removed.



Pour isopropyl alcohol onto a paper towel and clean the end of the faucet.



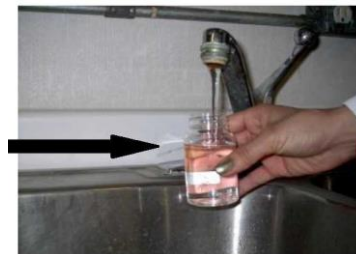
If the faucet is metal, use a propane torch or lighter to burn the end of the faucet for one minute.

### 2. ALLOW THE COLD WATER TO RUN FOR 8-10 MINUTES.

Initially run faucet at full flow. After five minutes adjust flow to a pencil sized width.



Remove the sealed cap from the sterile bottle. Please be careful not to touch the inside of the cap or bottle.



Fill the bottle up to the 100mL line on the sample bottle. Close cap securely without touching the inside of cap or bottle.

**For Nitrate, Nitrite, Fluoride, Arsenic, Lead, Copper, etc.**  
Instructions are included on back page. ----->

## Instructions for Nitrate, Nitrite, Fluoride, Iron, Manganese, Total Hardness, etc.

---



*Use bottle with red mark on the bottom.*

1. Run cold water for 8-10 minutes.
2. Fill sample bottle completely.

## Instructions for Arsenic

---



*Use bottle with red mark on the bottom.*

1. Run cold water for 8-10 minutes.
2. Fill sample bottle completely.

*Water sampled should be raw water (from the pressure tank tap or an outside faucet). The water should not run through a hot water heater, softener, RO or filter.*

## Instructions for Lead and Copper

---



*Use 1 Liter Sampling Bottle*

1. Let the water sit in the plumbing system for at least 6 hours.
2. Collect at least a 1 liter sample from the cold water kitchen tap or bathroom sink tap.

*\*First-draw samples from a nonresidential building shall be collected at an interior tap from which water is typically drawn for consumption. Non-first-draw samples collected in lieu of first-draw samples shall be one liter in volume and shall be collected at an interior tap from which water is typically drawn from.*